



CORN

ROB-SEE-CO™

ROB-SEE-CO™

ROB-SEE-CO™

RM 84

RC3432-VT2P



- Outstanding performance in tough to moderate yield environments
- Excellent performance on drought prone soils
- Strong roots and fast drydown to enable harvest flexibility

MATURITY INFORMATION AND PLANT CHARACTERISTICS

RM to Silk	84
RM to Blacklayer	84
GDU to Blacklayer	-
Plant Height	6
Ear Height	6
Test Weight	7
Kernel Rows	16-18
Cob Color	Red
Husk Cover	Medium

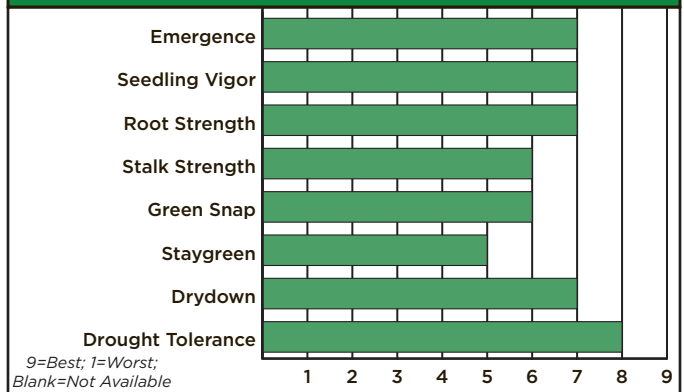
Plant Height: 9=Tall, 1=Short; Ear Height & Test Weight: 9=High, 1=Low

YIELD RESPONSE X POPULATION, AND PRODUCT FIT

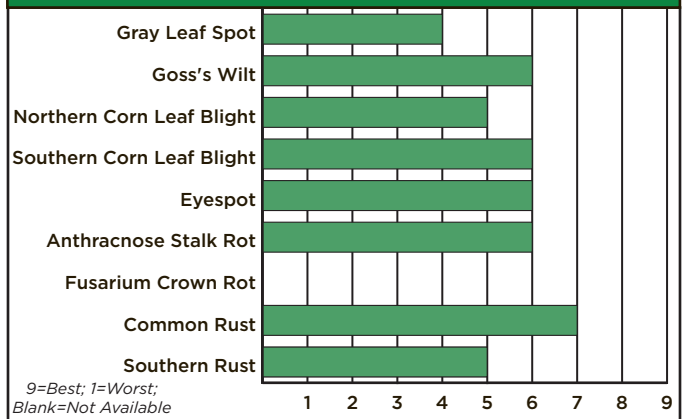
- Excellent performance relative to other hybrids in maturity group.
- Performs very well relative to other hybrids in maturity group.
- Performance is average relative to other hybrids in maturity group.
- ⊗ Performs below desired levels relative to other hybrids in maturity group.

NOTES

AGRONOMIC CHARACTERISTICS



DISEASE TOLERANCE



PRODUCT FIT

Highly Productive Soils	●
Variable Soils	●
Poorly Drained Soils	●
High pH (NE, KS, CO)	—
Corn on Corn: Yield Retention	●
Corn on Corn: Agronomic Characteristics	●
R1 Fungicide Response in Absence of Disease	—

YIELD RESPONSE X POPULATION*

Well Below Normal	—
Below Normal	●
"Normal" population for growing environment	●
Above Normal	●
Well Above Normal	—

Planting Rate Guideline: Medium

Seeding Rate: Optimal seeding rate varies by yield potential, with more productive farms responding to higher seeding rates. The table below shows the seeding rate producing the greatest economic return by yield environment and corresponds to the "normal" population column in the above chart. The above and below normal symbols indicate how well the hybrids respond to seeding rates that are higher or lower compared to the table value for each yield environment. Population response data based on a \$4.00/Bu commodity price and \$250/unit seed cost.

YIELD ENVIRONMENT (BU/A)	100	140	180	220	260
SEEDING RATE	16,000	24,000	29,500	33,000	36,000

*For more information on Yield Response X Population, please refer to the Population Ratings Agronomy Tip Sheet at www.robseeco.com

Important: Always read and follow label instructions. Some products may not be registered for sale or use in all states or counties. Please check with your local extension service to ensure registration status.

Important: Always read and follow label and bag tag instructions; only those labeled as tolerant to glufosinate may be sprayed with glufosinate ammonium based herbicides.

Avicta Complete Corn 250 is a Restricted Use Pesticide. For use by certified applicators only. Growers planting Avicta treated seed are not required to be certified applicators. Avicta technology is protected by U.S. Patent No. 6,875,727.

CruiserMaxx Corn is an on-seed application of Cruiser 5F5 insecticide delivered at the 0.25, 0.50 or 1.25 mg ai/seed rate and Maxim Quattro fungicide.



Innotech® is a Syngenta brand distributed by Rob-See-Co. Agrisure®, Agrisure Artesian®, Agrisure Duracade®, Agrisure Viptera®, Apron XL®, Avicta®, Cruiser®, CruiserMaxx®, E-Z Refuge®, Innotech®, and Maxim® are registered trademarks of a Syngenta Group Company. HERCULEX® and the HERCULEX Shield are trademarks of Corteva Agriscience LLC. Agrisure® Technology incorporated into these seeds is commercialized under license from Syngenta Seeds, LLC. Herculex® Technology incorporated into these seeds is commercialized under license from Corteva Agriscience LLC. YieldGard VT Pro® is a registered trademark used under license from the Bayer Group. More information about Duracade™ is available at <http://www.biotradestatus.com/>.



Seed products with the LibertyLink® (LL) trait are resistant to the herbicide glufosinate ammonium, an alternative to glyphosate in corn, and combine high-yielding genetics with the powerful, non-selective, postemergent weed control of Liberty® herbicide for optimum yield and excellent weed control. Liberty®, LibertyLink®, and the Water Droplet logo are registered trademarks of BASF.



Before opening a bag of seed, be sure to read and understand the stewardship requirements, including applicable refuge requirements for insect resistance management, for the biotechnology traits expressed in the seed set forth in the technology agreement that you sign. By opening and using a bag of seed, you are reaffirming your obligation to comply with the most recent stewardship requirements.

Bayer Company is a member of Excellence Through Stewardship® (ETS). Bayer products are commercialized in accordance with ETS Product Launch Stewardship Guidance, and in compliance with Bayer's Policy for Commercialization of Biotechnology-Derived Plant Products in Commodity Crops. This product has been approved for import into key export markets with functioning regulatory systems. Any crop or material produced from this product can only be exported to, or used, processed or sold in countries where all necessary regulatory approvals have been granted. It is a violation of national and international law to move material containing biotech traits across boundaries into nations where import is not permitted. Growers should talk to their grain handler or product purchaser to confirm their buying position for this product. Excellence Through Stewardship® is a registered trademark of Excellence Through Stewardship. B.t. products may not yet be registered in all states. Check with your representative for the registration status in your state.



IMPORTANT IRM INFORMATION: RIB Complete® corn blend products do not require the planting of a structured refuge except in the Cotton-Growing Area where corn earworm is a significant pest. See the IRM/Grower Guide for additional information. Always read and follow IRM requirements. DroughtGard® Hybrids with RIB Complete® corn blend the refuge seed may not always contain DroughtGard® Hybrids trait. ALWAYS READ AND FOLLOW PESTICIDE LABEL DIRECTIONS. It is a violation of federal and state law to use any pesticide product other than in accordance with its labeling. NOT ALL formulations of dicamba or glyphosate are approved for in-crop use with Roundup Ready 2 Xtend® soybeans. NOT ALL formulations of dicamba or glyphosate are approved for in-crop use with XtendFlex® Technology. ONLY USE FORMULATIONS THAT ARE SPECIFICALLY LABELED FOR SUCH USES AND APPROVED FOR SUCH USE IN THE STATE OF APPLICATION. Contact the U.S. EPA and your state pesticide regulatory agency with any questions about the approval status of dicamba herbicide products for in-crop use with Roundup Ready 2 Xtend® soybeans or products with XtendFlex® Technology. Roundup Ready 2 Xtend® soybeans contain genes that confer tolerance to glyphosate and dicamba. Products with XtendFlex® Technology contains genes that confer tolerance to glyphosate, glufosinate and dicamba. Glyphosate will kill crops that are not tolerant to glyphosate. Dicamba will kill crops that are not tolerant to dicamba. Glufosinate will kill crops that are not tolerant to glufosinate. Contact your seed brand dealer or refer to the Bayer Technology Use Guide for recommended weed control programs. XtendFlex®, Roundup Ready 2 Xtend®, RIB Complete and Design®, RIB Complete®, Roundup Ready 2 Technology and Design®, Roundup Ready®, DroughtGard®, Trecepta®, Trecepta®, SmartStax®, and VT Double PRO® are trademarks of Bayer Group. LibertyLink® and the Water Droplet Design® are registered trademarks of BASF Corporation. Herculex® is a registered trademark of Dow AgroSciences LLC. Insect control technology provided by Vip3A is utilized under license from Syngenta Crop Protection AG. Agrisure Viptera® is a registered trademark of a Syngenta group company. Respect the Refuge and Corn Design® and Respect the Refuge® are registered trademarks of National Corn Growers Association.

formulations of dicamba, glyphosate or glufosinate are approved for in-crop use with products with XtendFlex® Technology. ONLY USE FORMULATIONS THAT ARE SPECIFICALLY LABELED FOR SUCH USES AND APPROVED FOR SUCH USE IN THE STATE OF APPLICATION. Contact the U.S. EPA and your state pesticide regulatory agency with any questions about the approval status of dicamba herbicide products for in-crop use with Roundup Ready 2 Xtend® soybeans or products with XtendFlex® Technology. Roundup Ready 2 Xtend® soybeans contain genes that confer tolerance to glyphosate and dicamba. Products with XtendFlex® Technology contains genes that confer tolerance to glyphosate, glufosinate and dicamba. Glyphosate will kill crops that are not tolerant to glyphosate. Dicamba will kill crops that are not tolerant to dicamba. Glufosinate will kill crops that are not tolerant to glufosinate. Contact your seed brand dealer or refer to the Bayer Technology Use Guide for recommended weed control programs. XtendFlex®, Roundup Ready 2 Xtend®, RIB Complete and Design®, RIB Complete®, Roundup Ready 2 Technology and Design®, Roundup Ready®, DroughtGard®, Trecepta®, Trecepta®, SmartStax®, and VT Double PRO® are trademarks of Bayer Group. LibertyLink® and the Water Droplet Design® are registered trademarks of BASF Corporation. Herculex® is a registered trademark of Dow AgroSciences LLC. Insect control technology provided by Vip3A is utilized under license from Syngenta Crop Protection AG. Agrisure Viptera® is a registered trademark of a Syngenta group company. Respect the Refuge and Corn Design® and Respect the Refuge® are registered trademarks of National Corn Growers Association.



Agrisure®, Agrisure® Above, Agrisure Artesian®, Artesian™, Agrisure Duracade®, Agrisure Viptera®, Duracade™, DuracadeViptera™, Viptera™, Viptera™Z3 and E-Z Refuge® are trademarks of a Syngenta Group Company. **IMPORTANT:** Always read and follow label and bag tag instructions; only those labeled as tolerant to glufosinate may be sprayed with glufosinate ammonium based herbicides. More information about Duracade™ is available at <http://www.biotradestatus.com/>. Seed products with the LibertyLink® (LL) trait are resistant to the herbicide glufosinate ammonium, an alternative to glyphosate in corn, and combine high-yielding genetics with the powerful, non-selective, postemergent weed control of Liberty® herbicide for optimum yield and excellent weed control. Corn trait Technology incorporated into these seeds is commercialized under license from Syngenta Seeds, LLC. LibertyLink®, Liberty® and the Water Droplet logo are registered trademarks of BASF. Herculex® Technology incorporated into these seeds is commercialized under license from Corteva Agriscience LLC. HERCULEX® and the HERCULEX Shield are trademarks of Corteva Agriscience LLC.

for optimum yield and excellent weed control. Corn trait Technology incorporated into these seeds is commercialized under license from Syngenta Seeds, LLC. LibertyLink®, Liberty® and the Water Droplet logo are registered trademarks of BASF. Herculex® Technology incorporated into these seeds is commercialized under license from Corteva Agriscience LLC. HERCULEX® and the HERCULEX Shield are trademarks of Corteva Agriscience LLC.



In the following states, purchase and use of HarvXtra® Alfalfa with Roundup Ready® Technology is subject to a Seed and Feed Use Agreement, requiring that products of this technology can only be used on farm or otherwise be used in the United States: Arizona, California, Colorado, Idaho, Montana, Nevada, New Mexico, Oregon, Utah, Washington and Wyoming. In addition, due to the unique cropping practices do not plant HarvXtra® Alfalfa with Roundup Ready® Technology in Imperial County, California, pending import approval and until Forage Genetics International, LLC (FGI) grants express permission for such planting. Forage Genetics International, LLC ("FGI") is a member of Excellence Through Stewardship® (ETS). FGI products are commercialized in accordance with ETS Product Launch Stewardship Guidance, and in compliance with FGI's Policy for Commercialization of Biotechnology-Derived Plant Products in Commodity Crops. HarvXtra® Alfalfa with Roundup Ready® Technology and Roundup Ready® Alfalfa have pending import approvals. GROWERS MUST DIRECT ANY PRODUCT PRODUCED FROM HARVXTRA® ALFALFA WITH ROUNDUP READY® TECHNOLOGY SEED OR CROPS (INCLUDING HAY AND HAY PRODUCTS) ONLY TO UNITED STATES DOMESTIC USE. Any crop or material produced from this product can only be exported to, or used, processed or sold in countries where all necessary regulatory approvals have been granted. It is a violation of national and international law to move material containing biotech traits across boundaries into nations where import is not permitted. Growers should talk to their grain handler or product purchaser to confirm their buying position for this product. Growers should refer to <http://www.biotradestatus.com/> for any updated information on import country approvals. Excellence Through Stewardship® is a registered trademark of Excellence Through Stewardship. ALWAYS READ AND FOLLOW PESTICIDE LABEL DIRECTIONS. Roundup Ready® crops contain genes that confer tolerance to glyphosate. Glyphosate herbicides will kill crops that are not tolerant to glyphosate. Roundup Ready® is a registered trademark of Bayer Group, used under license by Forage Genetics International, LLC. HarvXtra® is a registered trademark of Forage Genetics International, LLC. HarvXtra® Alfalfa with Roundup Ready® Technology is enabled with Technology from The Samuel Roberts Noble Foundation, Inc.

Seed containing the XtendFlex® traits can only be used to plant a single commercial crop. It is unlawful to save and replant XtendFlex® soybeans. Additional information and limitations on the use of this product are provided in the Technology Stewardship Agreement and the Bayer Technology Use Guide: tug.bayer.com. U.S. patents for Bayer technologies can be found at the following webpage: cs.bayerpatents.bayer.com



Corteva Agriscience is a member of Excellence Through Stewardship® (ETS). Corteva Agriscience products are commercialized in accordance with ETS Product Launch Stewardship Guidance and in compliance with the Corteva Agriscience policies regarding stewardship of those products. In line with these guidelines, our product launch process for responsible launches of new products includes a longstanding process to evaluate export market information, value chain consultations, and regulatory functionality. Growers and end users must take all steps within their control to follow appropriate stewardship requirements and confirm their buyer's acceptance of the grain or other material being purchased. For more detailed information on the status of a trait or stack, please visit www.biotradestatus.com.

Seeds containing the Enlist, Herculex and PowerCore traits are protected under one or more U.S. patents which can be found at: www.traitstewardship.com. The purchase of these seed traits include a limited license to produce a single crop in the United States. The use of seed from such a crop or the progeny thereof for propagation or seed multiplication or for production or development of a hybrid or different variety of seed is strictly prohibited. You acknowledge and agree to be bound by the terms and conditions of the following documents in effect at the time of planting of this seed: (i) the Corteva Agriscience Technology Use Agreement and (ii) the Product Use Guides for all technologies in this seed, including the Herbicide Resistance Management (HRM), and Use requirements. To plant Enlist, Herculex and PowerCore seed, you must have a limited license from Corteva Agriscience (or other appropriate affiliates). In consideration of the foregoing, Corteva Agriscience grants to the Grower the limited license to use its technology to produce only a single commercial crop in the United States under the terms and conditions set forth in the Technology Use Agreement in effect at the time of planting of this seed.

Always read and follow herbicide label directions prior to use: Enlist® products contain the Enlist trait that provides crop safety for use of labeled over-the-top applications of glyphosate, glufosinate and 2,4-D herbicides featuring Colex-D® technology when applied according to label directions. Following burndown, the only 2,4-D containing herbicide products that may be used with Enlist® crops are products that feature Colex-D technology and are expressly labeled for use on Enlist crops. 2,4-D products that do not contain Colex-D technology are not authorized for use in conjunction with Enlist products.

The transgenic soybean event in Enlist E3® soybeans is jointly developed and owned by Corteva Agriscience and M.S. Technologies, L.L.C.™ Enlist, Enlist E3, the Enlist E3 logo, and Colex-D are trademarks of Corteva Agriscience and its affiliated companies. Excellence Through Stewardship® is a registered trademark of Excellence Through Stewardship. Enlist E3® soybean seeds containing the Enlist® trait can only be used to plant a single commercial crop. It is unlawful to save and replant Enlist E3® soybeans. Additional information and limitations on the use of these products are provided in the Corteva Agriscience Technology Use Agreement and Enlist® Soybean Product Use Guide. U.S. patents for Dow AgroSciences technologies can be found at the following webpage: www.corteva.us/Resources/trait-stewardship.html

XtendiMax® with VaporGrip® is a registered trademark of Bayer Group. ALWAYS READ AND FOLLOW PESTICIDE LABEL DIRECTIONS. XtendiMax® herbicide with VaporGrip® Technology is a restricted use pesticide.